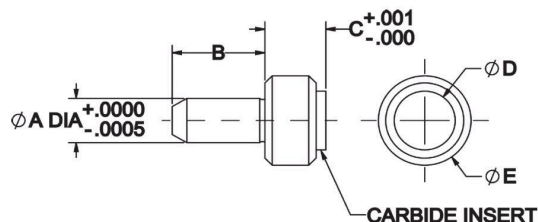


## CARBIDE-TIPPED REST BUTTONS

BODY: 1144 STEEL, HEAT TREATED RC 40-45, BLACK OXIDE FINISH  
PAD: CARBIDE



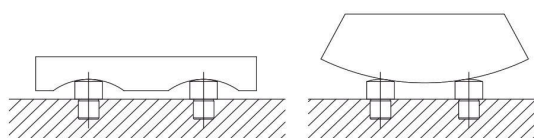
Carbide-Tipped Rest Buttons are available in many of the same diameters and heights as our standard Rest Buttons on the previous page, so they can be used as direct replacements where additional wear resistance is desired. These rest buttons feature a thick embedded carbide pad, finish machined to a precision height. Like a standard Rest Button, these locators have a close-tolerance shank for installation in a reamed hole.

### STEEL (INCH)

PART NO.	A DIA		B	C		D DIA	E DIA
	NOMINAL	ACTUAL		NOMINAL	ACTUAL		
CL-12-CTRB	3/16	.1885	3/8	1/4	.2500	1/4	3/8
CL-14-CTRB				1/2	.5000		
CL-3-CTRB	1/4	.2510	1/2	3/8	.3750	3/8	1/2
CL-5-CTRB	3/8	.3760	5/8	1/4	.2500	1/2	5/8
CL-6-CTRB				3/8	.3750		
CL-7-CTRB				5/8	.6250		
CL-15-CTRB	1/2	.5010	5/8	3/8	.3750	3/4	7/8
CL-9-CTRB				1/2	.5000		
CL-19-CTRB	3/4	.7515	7/8	1/2	.5000	1	1-1/4

## SPHERICAL RADIUS LOCATOR BUTTONS

1144 STEEL, HEAT TREATED RC 40-45, BLACK OXIDE FINISH



Precision height locator with a spherical-radius head to minimize workpiece contact area. Close-tolerance shank allows press-fit installation in a reamed hole. Spherical-Radius Locator Buttons are extremely useful as supports, side locator pads, and jig feet.

### INCH

PART NO.	B DIA	A DIA	C	D	E
CL-1-SLB	3/16	5/16	.1250	3/8	1/2
CL-2-SLB	1/4	3/8	.1875	1/2	5/8
CL-3-SLB	3/8	1/2	.1875	9/16	3/4
CL-4-SLB			.2500	5/8	
CL-5-SLB			.3750	3/4	
CL-6-SLB			.5000	7/8	

